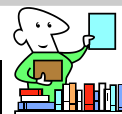




Headteacher's Holiday Homework



What is the best book you have ever read?

Who is your favourite author?

For this half-term's homework I am asking all the children to record on one sheet of A4 their answer to **one** of these questions. The work might include pictures, facts, quotes or anything to help others understand their choice. The best examples will be displayed in our new library area after half term. In our run-up to **World Book Day** on Wednesday 12th March there will be loads of great activities such as : Paired reading (Y6 with Y4, Y5 with Y3), 'DEAR' week (Drop Everything And Read), Winter Olympic themes, Class Assembly and lots lots more. More information for parents and children on the website.

[Signature]

Open	8:35am 3:05pm
Close	8:55am 3:25pm

Barnes Farm School Gate Opening Times UPDATED

A mistake was made with the times listed in the previous newsletter. Side gates will close at 3:25pm to ensure clubs can run smoothly. Please follow these guidelines to ensure the safety and security of all those who use our site. Entry and exit at all other times are through the main entrances for both schools.



Megan's Charity Bike Ride



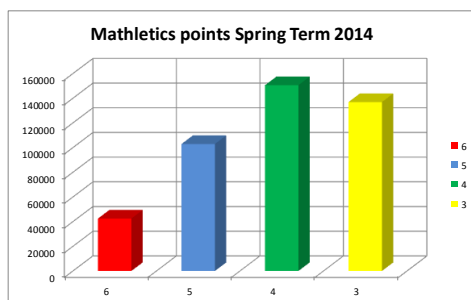
On 27th April, Megan Lilley in Year 6 is cycling 35 miles around Chelmsford to raise money for The J's Hospice in Great Baddow as part of 'Pedal for the J's'. She is hoping to raise £250. Good luck Megan and if you wish to support her cause please go to www.justgiving.com/Megan-Lilley

Message from our Office Team

Learning Habits—If you have a message for your child's teacher please can you write it in their learning habit book.

Friends of Barnes Farm Schools AGM is on Monday 10th March in the Barn @ 7:45pm All welcome!

Mathletics Year Group Challenge



Every time your child logs on to Mathletics their points are added to their year group for a bonus at the end of the term.
Y4 are now in the lead!

Other Key dates

- Fri 14th Feb** Non-Pupil Day 3
- Weds 12th Mar** World Book Day
- Fri 21st Mar** Sport Relief Day
- Fri 4th April** Last day of Spring Term
- Tues 22nd April** Non-Pupil Day 4
- Weds 23rd April** Pupils return for Summer Term
- Mon 5th May** Bank Holiday
- Thurs 22nd May** European Elections—School Open
- Fri 23rd May** Non-Pupil day 5
- Mon 2nd June** Return from half term
- Tues 22nd July** End of Term



Job Opportunity—Enquire at School Office

1 or 2 Cleaners/Supervisor required for the following hours at school:
12:30pm-1:45pm and/or 3:30-6:00pm £7.00 per hour
Monday to Friday during term time + 5 weeks during school holidays
Experience would be beneficial. DBS checks at an Enhanced level will be carried out.